



The “Aru 78 SOFTLINE EX” window with an angular profile is suitable for a modern energy saving building the larger frame is designed to accommodate triple glazing. This increases insulation values enough for use in a so-called passive house.



Handle Fix 83 Ms/Ha



A multi-layered deep-impregnated window, the bottom sash is protected with an aluminium glazing bead. To reduce heat loss at the edge of the glass, we recommend using an insulated glazing that has SWS (plastic) spacers rather than the traditional metal.

# Aru 78 SOFTLINE EX

## OUTWARD OPENING VACUUM DEEP-IMPREGNATED WOODEN WINDOW

### CROSS SECTIONS

Frame: 115x44 mm  
Sash: 78 x 68 mm

### HARDWARE

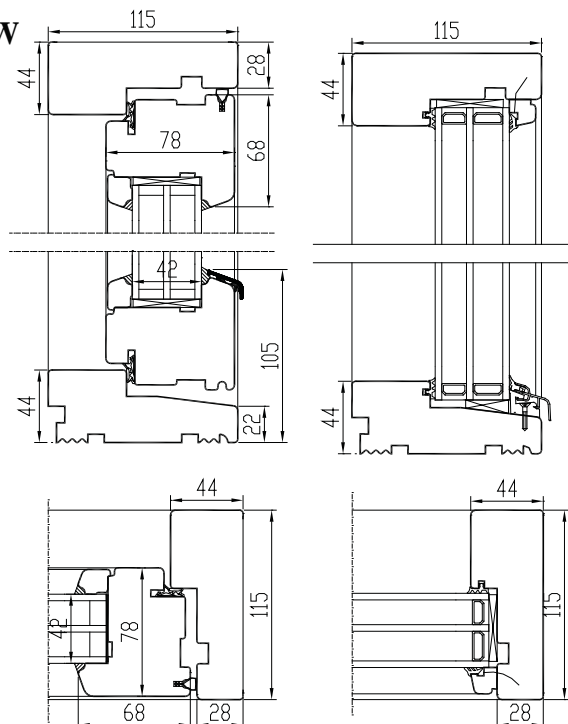
Hinges & Locking Mechanism: IPA, ASSA, HABO, FIX  
Handles: FIX, HOPPE, TITON

### GLASS

Triple glazing, 42 mm ( $U \geq 0,59 \text{ W/m}^2\text{K}$ )  
Glazing from the inside with wooden glazing bead  
Fastened with hidden nails, sealed with silicone  
Bottom glazing bead - aluminium

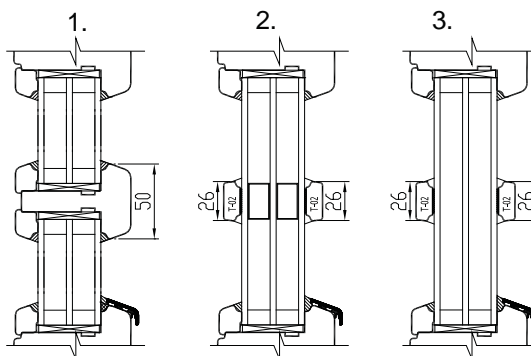
**SEALS** 2 x around the sash

**TIMBER FINISHING** with water-based paint or stain

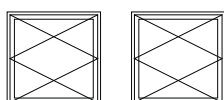
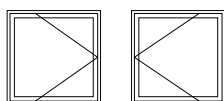
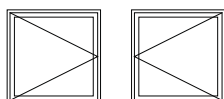
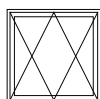
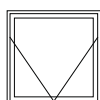
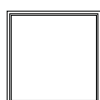


### GLAZING BAR OPTIONS

1. Penetrating bars 50 mm
2. Glued on both sides+slats inside the glazing (Norwegian style)
3. Glued on both sides (Georgian style)



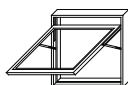
### OPENING: Outside view



### FIXED

Vacuum impregnated frame 115x44 mm,  
double glazing. Bottom glazing bead - aluminium  
*min dimensions 330x330 mm*

### TOPGUIDED



*dimensions L=370...1662; H=331...1462mm; max weight of sash 60 kg*

### TOPSWING

The outer side of the window can be turned inside for easy cleaning.

### SIDEHUNG (LEFT / RIGHT)

*dimensions L=515...1158; H=515...1870mm; max weight of sash 40 kg*

### SIDE-SLIDEHUNG (LEFT / RIGHT)



*dimensions L=364...952; H=515...1870mm; max weight of sash 40 kg*

### SIDE-SWING (LEFT / RIGHT)

The outer side of the window can be turned inside for easy cleaning.

*dimensions L=364...894; H=521...1876mm; max weight of sash 40 kg*