



“Aru AL 78 CORA IN” is a tilt & turn timber window with a 78 mm thick timber sash. On the outside, the window’s jamb and sash are both covered with aluminium profiles. The larger sash thickness accommodates triple glazed units and double seals suitable for a modern energy saving building; this increases insulation values enough for use in a so-called passive house. The aluminium cover increases the life-span of the window and makes cleaning it simpler.



The wooden parts are made of three-layered deep-impregnated laminated timber. To reduce heat loss at the edge of the glass, we recommend using an insulated glazing that has SWS (plastic) spacers rather than the traditional metal..

AruAL 78 CORA IN

INWARD OPENING TILT&TURN VACUUM DEEP-IMPREGNATED WOODEN-ALUMINIUM WINDOW

PROFILE IV78

Jamb: 78x78 mm

Frame: 78x78 mm

Inside groove for windowcill 6x30mm

outside groove for aluminium cill 12x30 mm

FURNITUR

Fittings: ROTO NT

Handle: ROTO, HOPPE



GLASS

42 mm triple glazed units ($U \geq 0,59 \text{ W/m}^2\text{K}$)

Glazing from the inside with wooden glazing bead

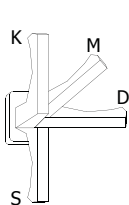
Fastened with hidden nails, sealed with silicone

SEAL

2-chamber seal surrounding middle frame rebate

TIMBER FINISHING with water-based paint or stain

ALUMINIUM FINISHING RAL aluminium colour range



tilt



microventilation



turn

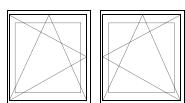


closed



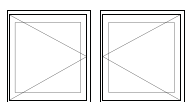
F - FIXED

min measures 330 x 330 mm



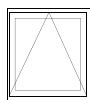
DK - TILT AND TURN (LEFT / RIGHT)

min max L=400...1710 mm H=408...2527 mm, weight max 130 kg



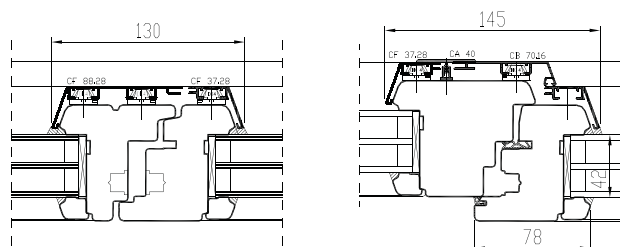
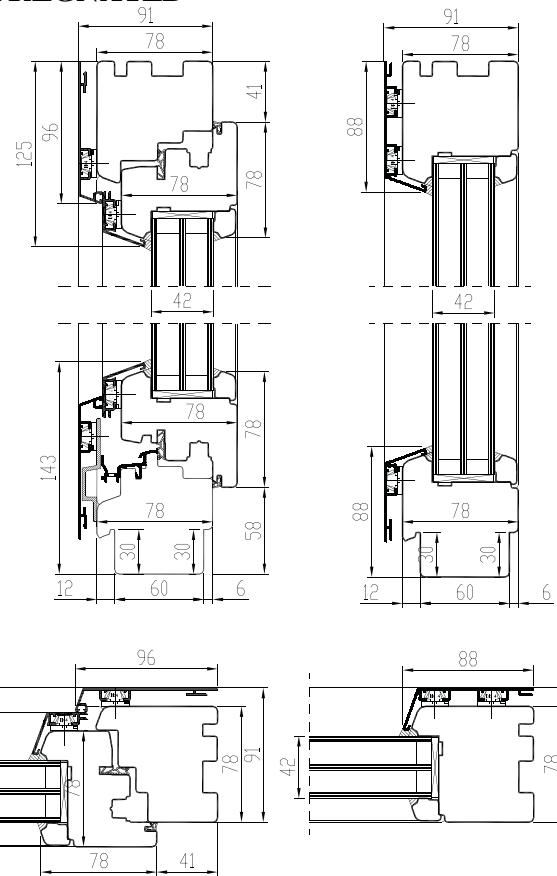
D - SIDEHUNG (LEFT / RIGHT)

min max L=400...1710 mm H=408...2527 mm, weight max 130 kg



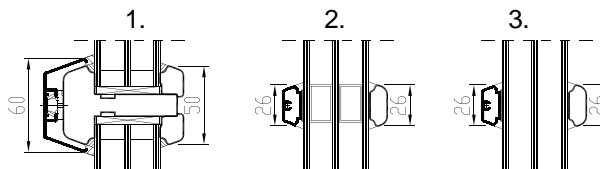
KIPP - TOPHUNG (Handle above)

min max L=330...2510 mm H=350...1927 mm, weight max 80 kg

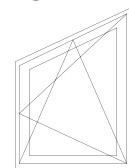


GLAZING BAR OPTIONS

1. Penetrating bars 50 mm
2. Taped bars Norwegian style
3. Taped bars Georgian style



Triangular window



Round-headed window

